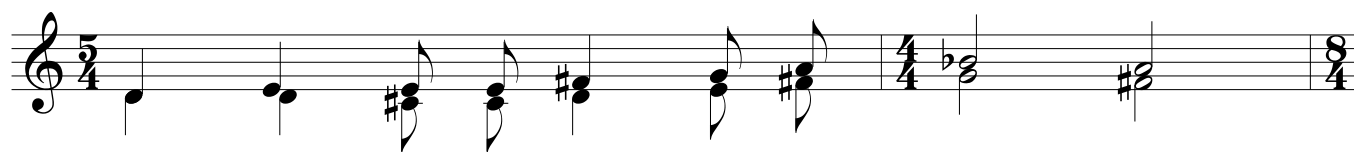
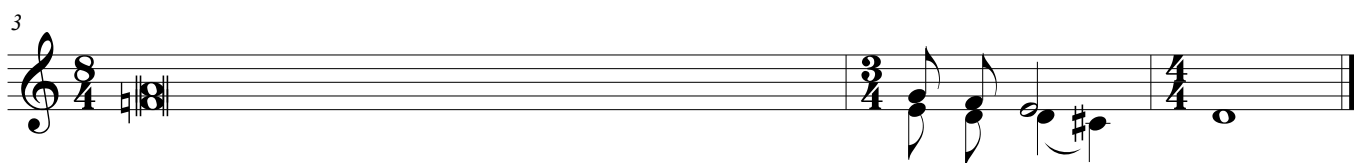


# Introitus

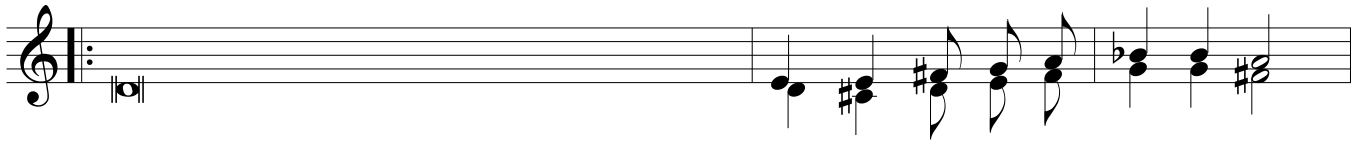


Ex o - re in - fán - ti - um, De - us,

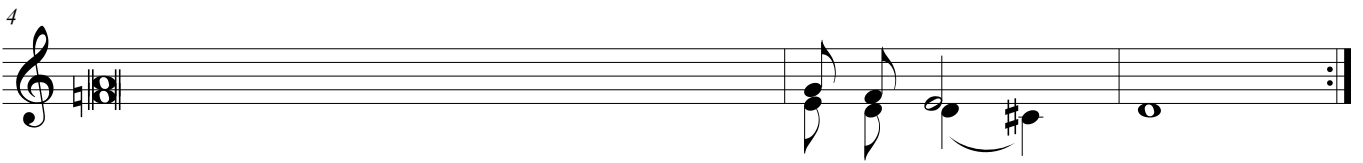


et lacténtium perfectísti laudem propter ini - mi-cos tu - os.

# Graduale



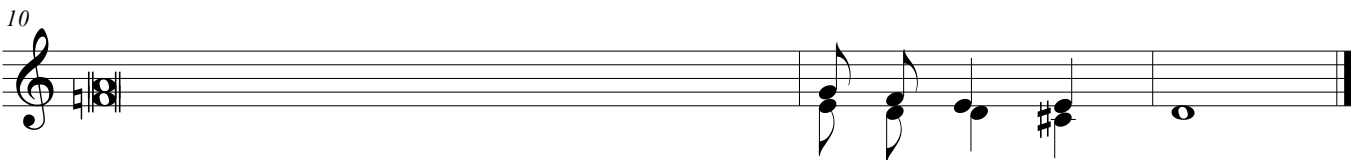
Anima nostra, sicut passer, erépta est de lá - que - o ve - nán - ti - um.  
adiutórium nos - - - - - trum in nó - mi - ne Dó - mi - ni,



láqueus contrítus est, et nos libe - rá - ti su - mus.  
qui fecit coe - - - - - lum et ter - ram.



Al - le - lú - ia, al - le - lú - ia.



Laudáte, púeri, Dominum, laudáte no - men Dó - mi - ni.

*rep. Allehúia*

